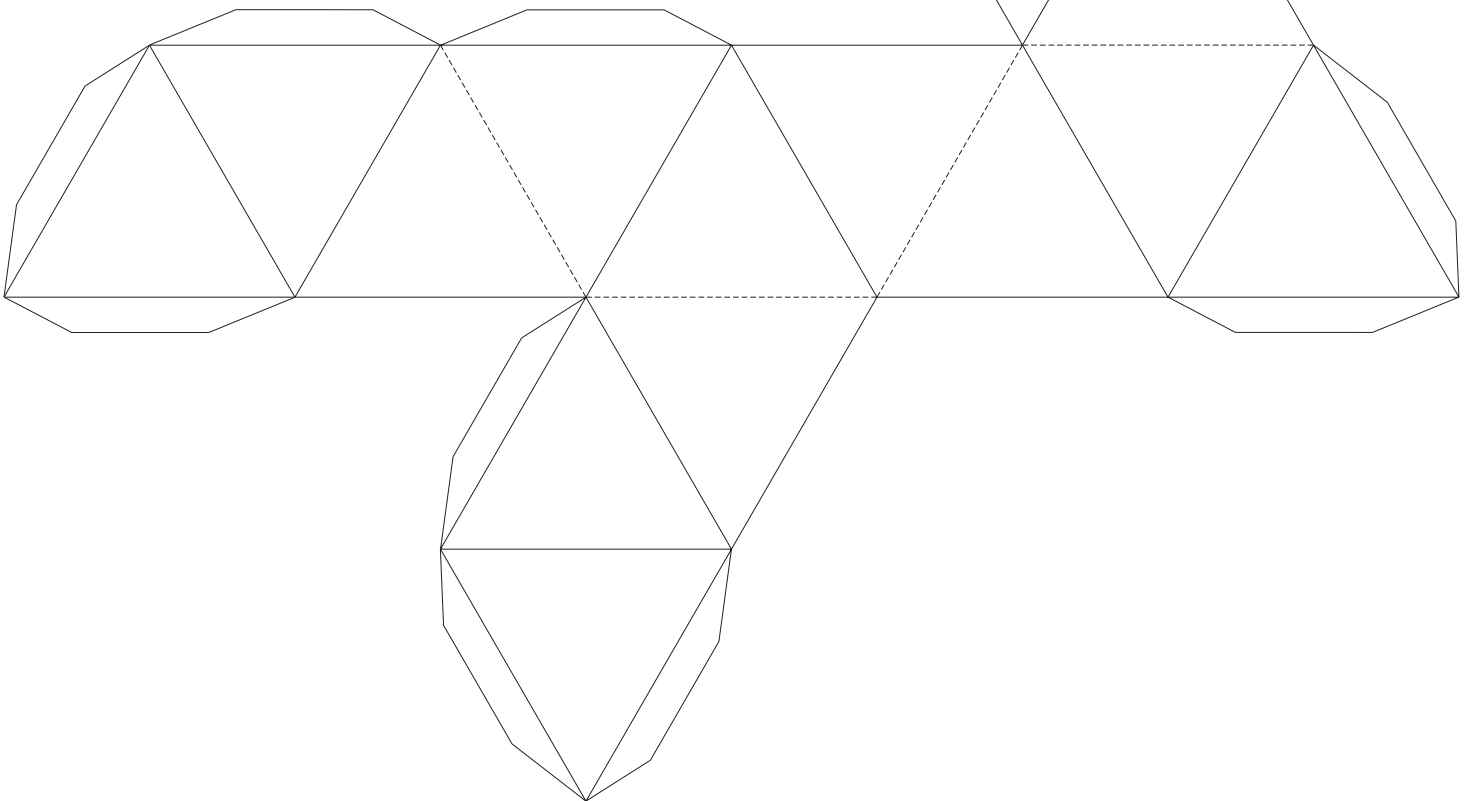
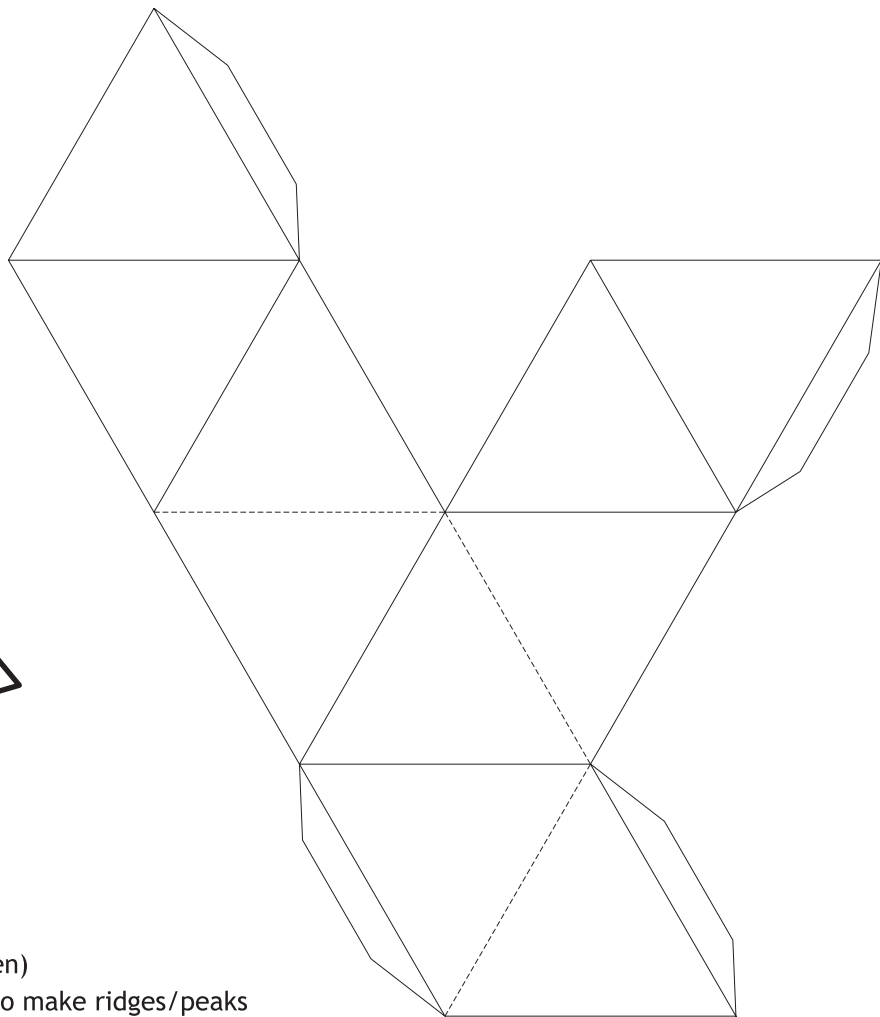
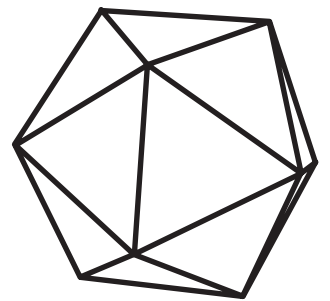
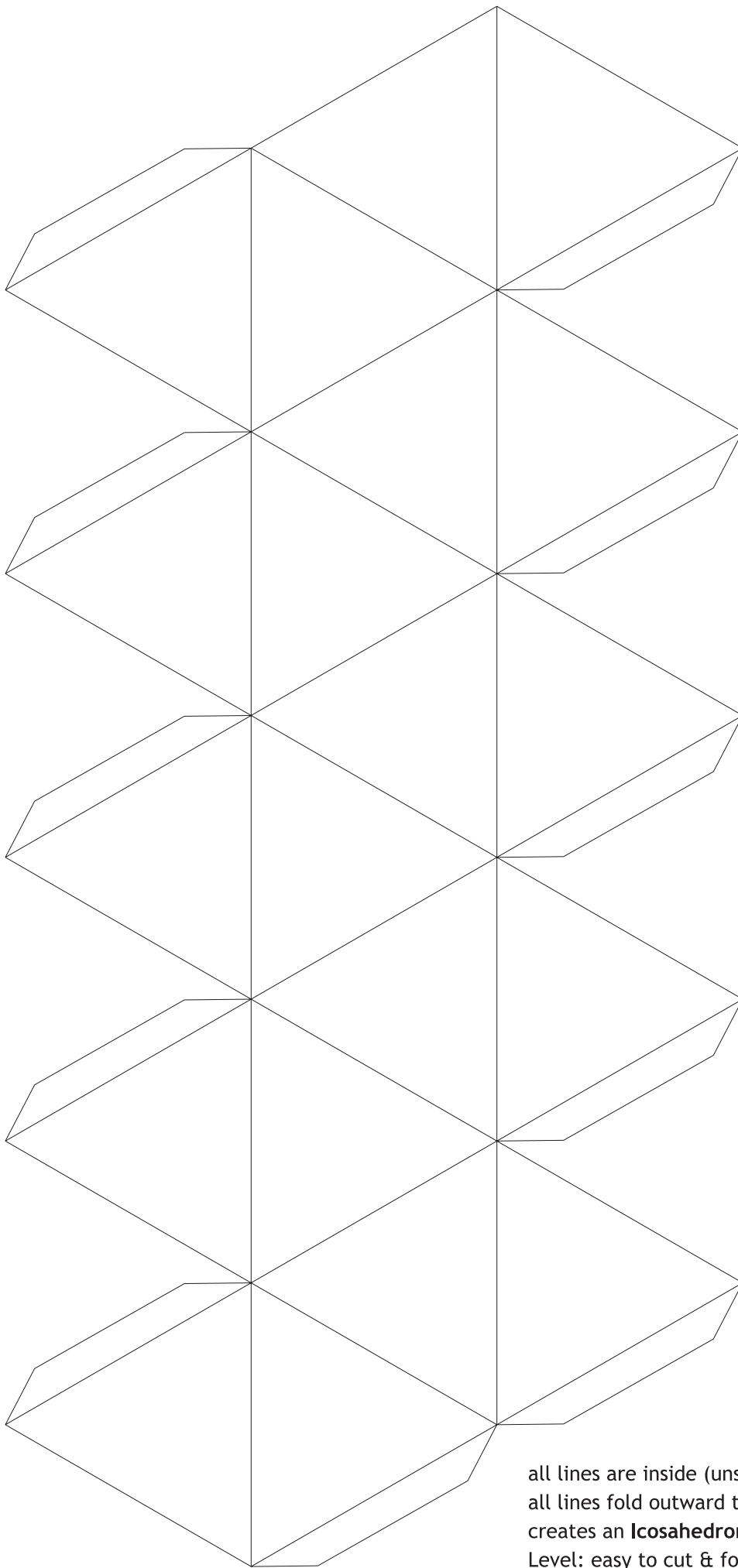


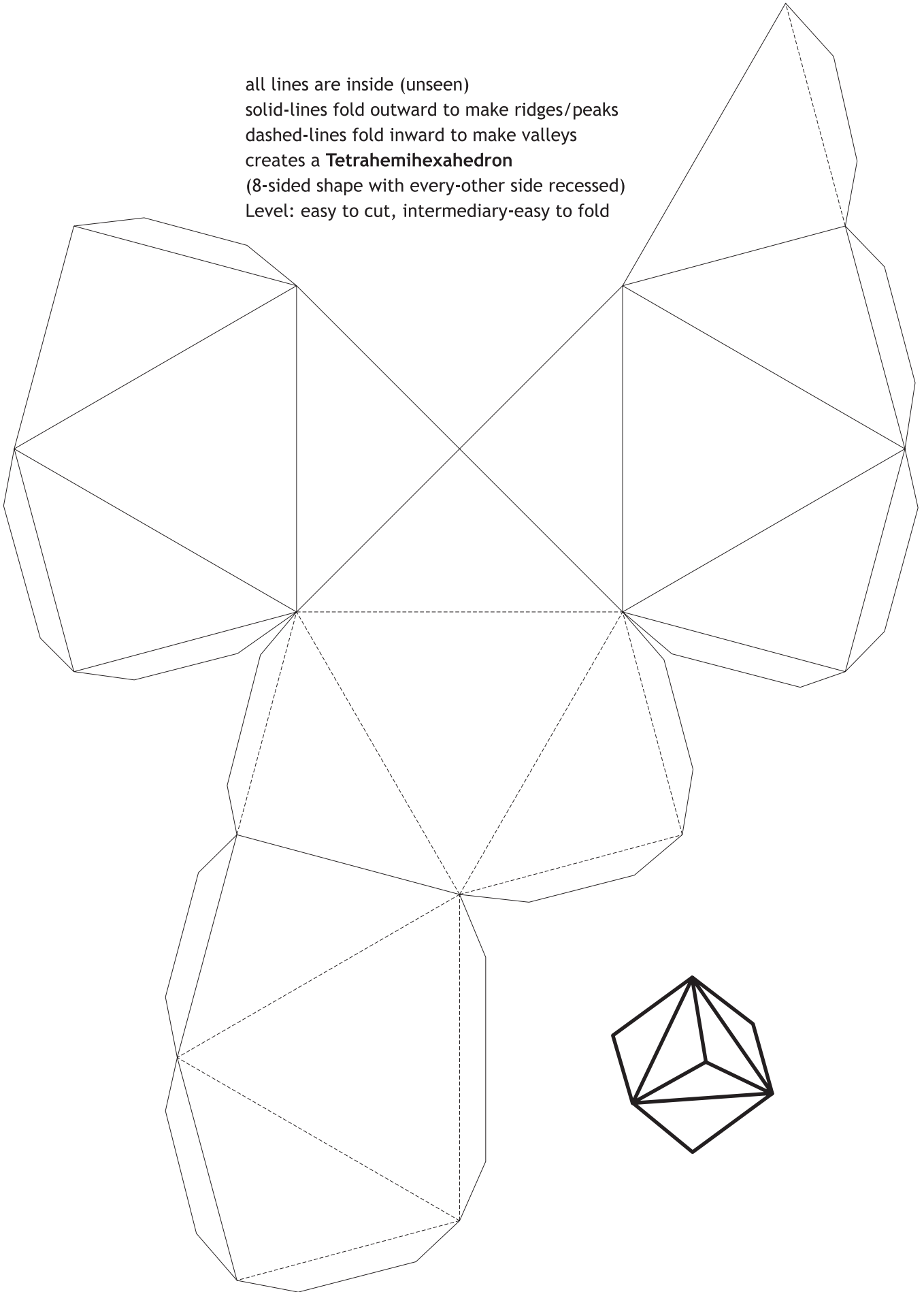
all lines are inside (unseen)
solid-lines fold outward to make ridges/peaks
dashed-lines fold inward to make valleys
creates a **Stella Octangula**
(2 pyramids combined; 1 pointing up and 1 pointing down)
Level: easy to cut & fold

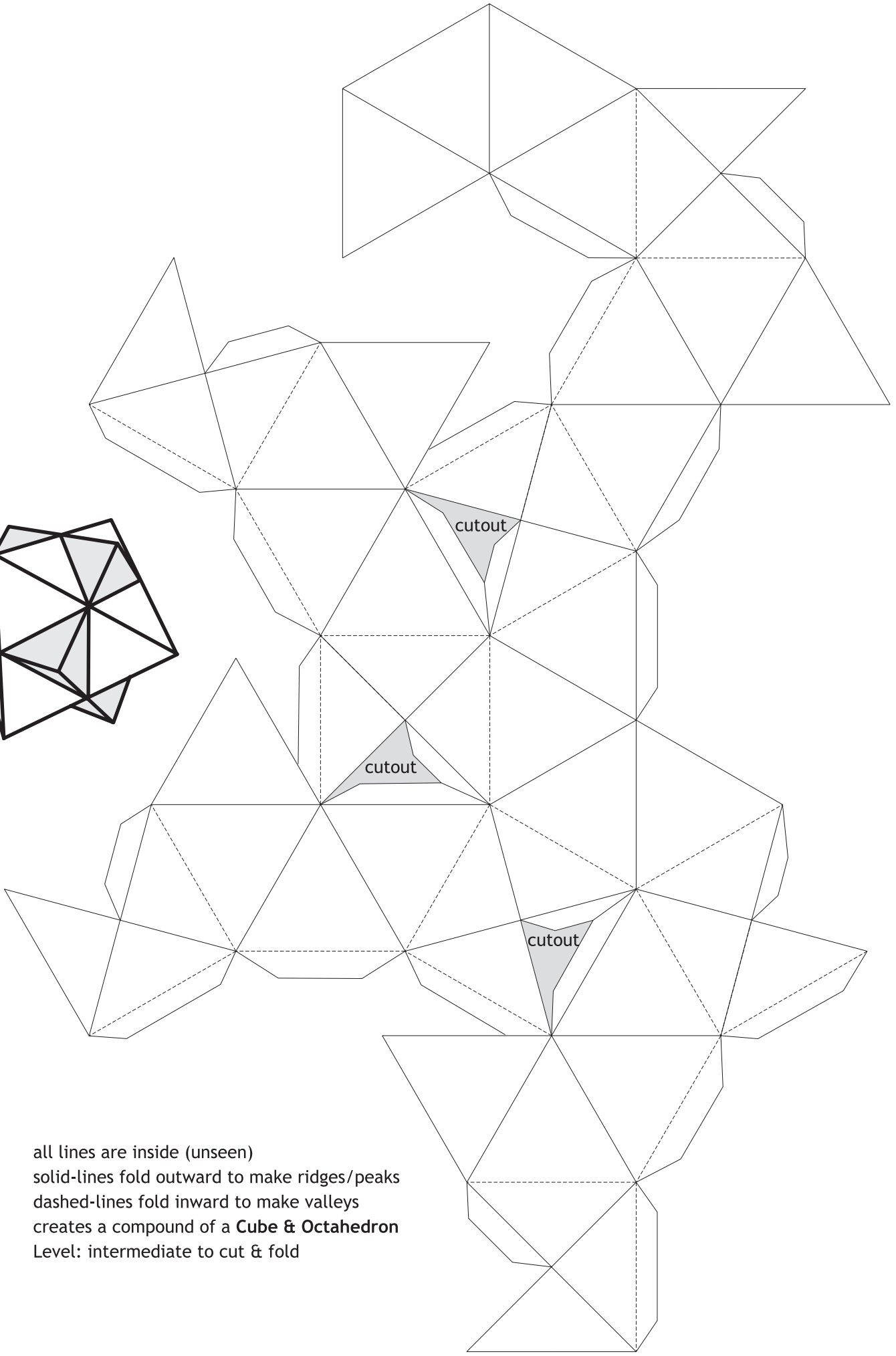
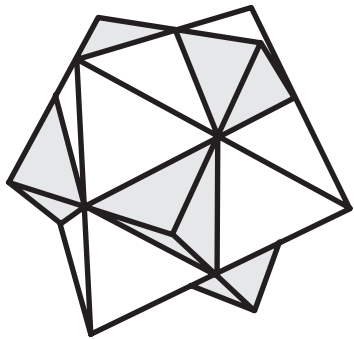




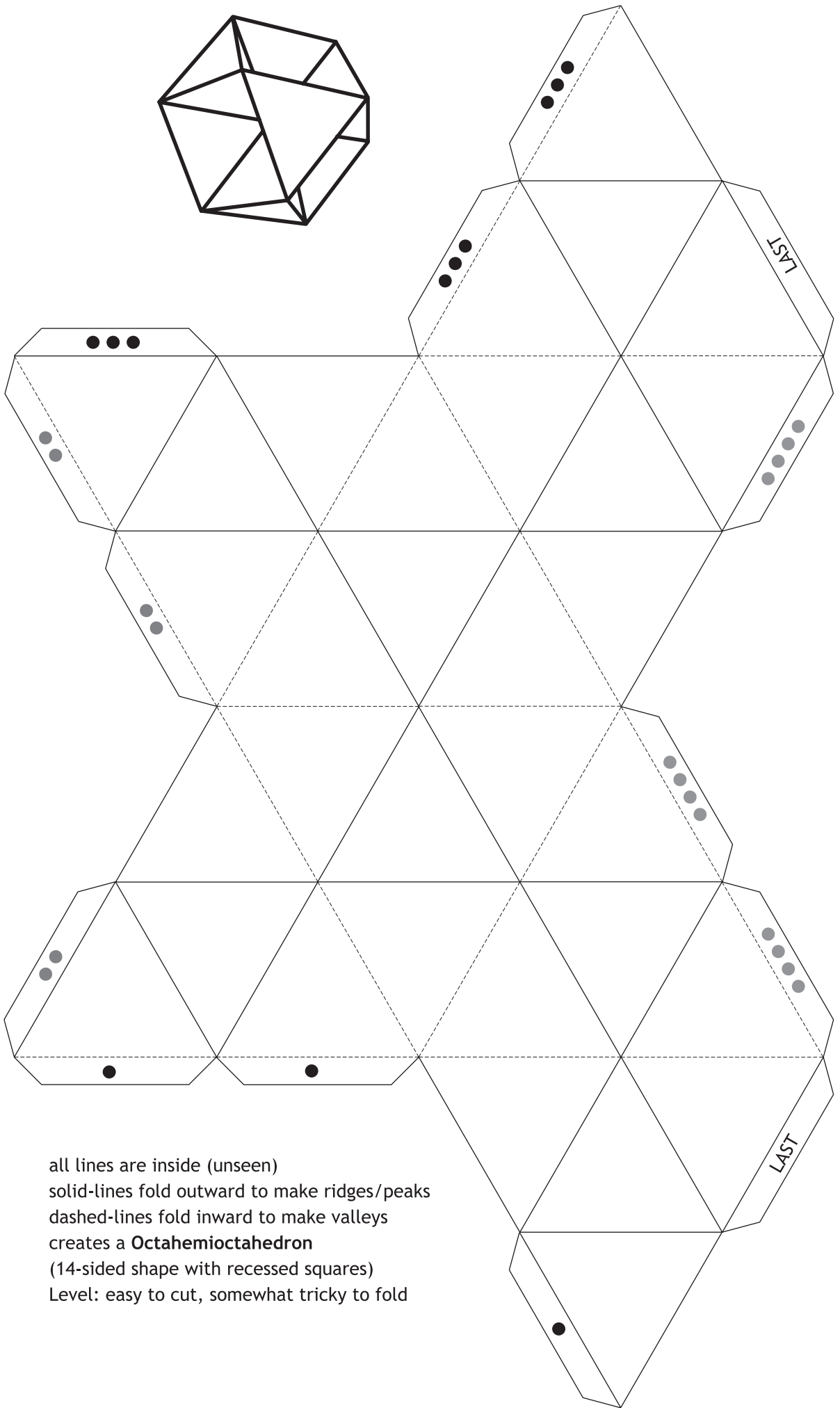
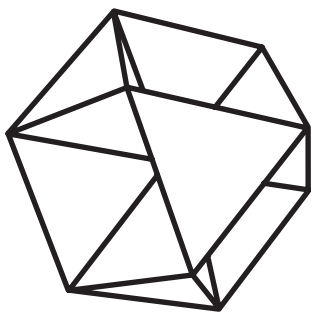
all lines are inside (unseen)
all lines fold outward to make ridges/peaks
creates an **Icosahedron** (simple 20-sided shape)
Level: easy to cut & fold

all lines are inside (unseen)
solid-lines fold outward to make ridges/peaks
dashed-lines fold inward to make valleys
creates a **Tetrahemihexahedron**
(8-sided shape with every-other side recessed)
Level: easy to cut, intermediary-easy to fold

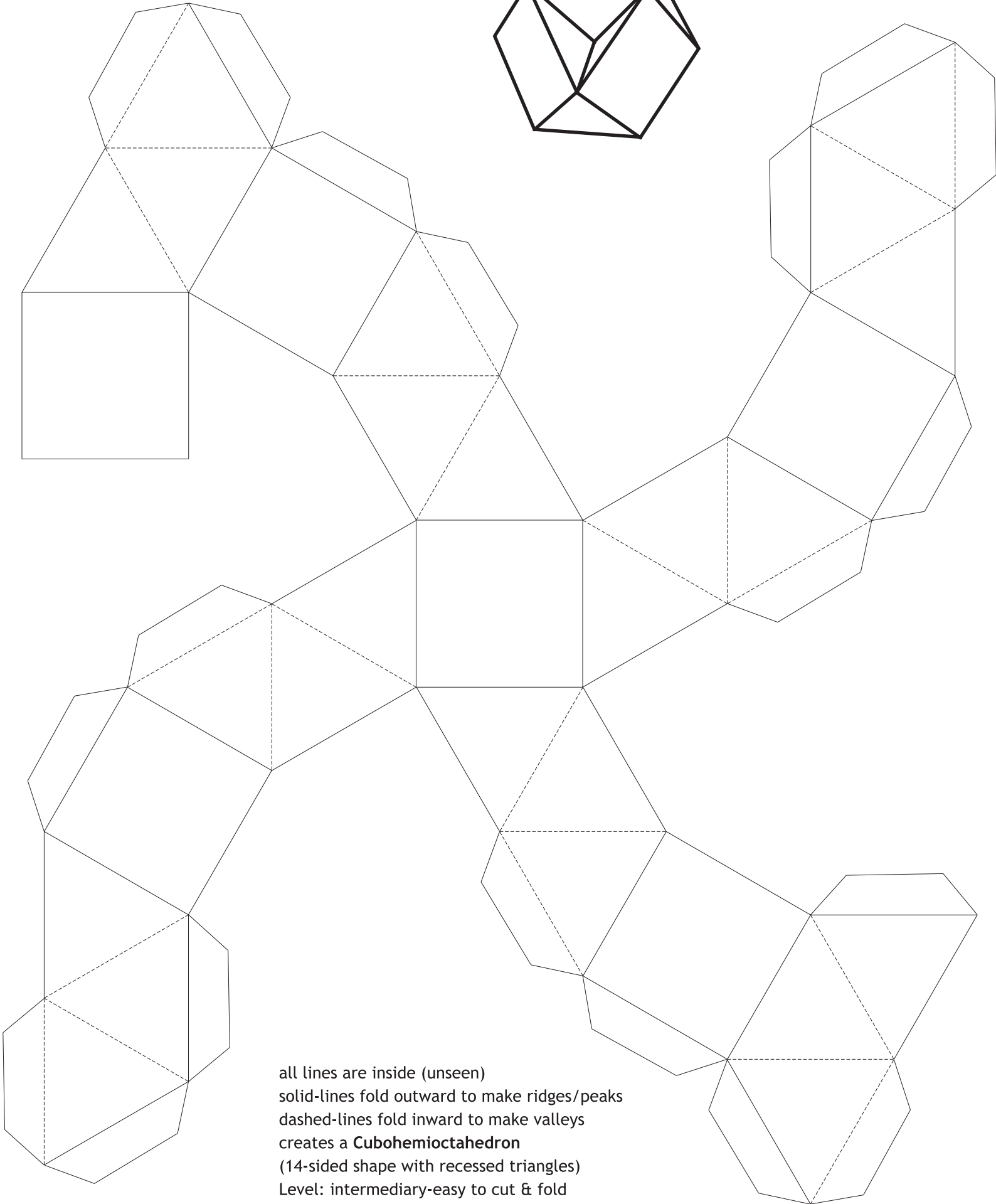
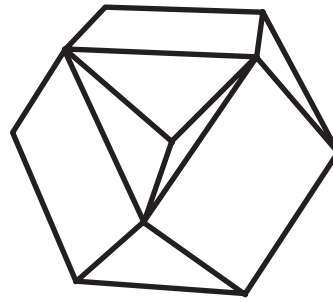




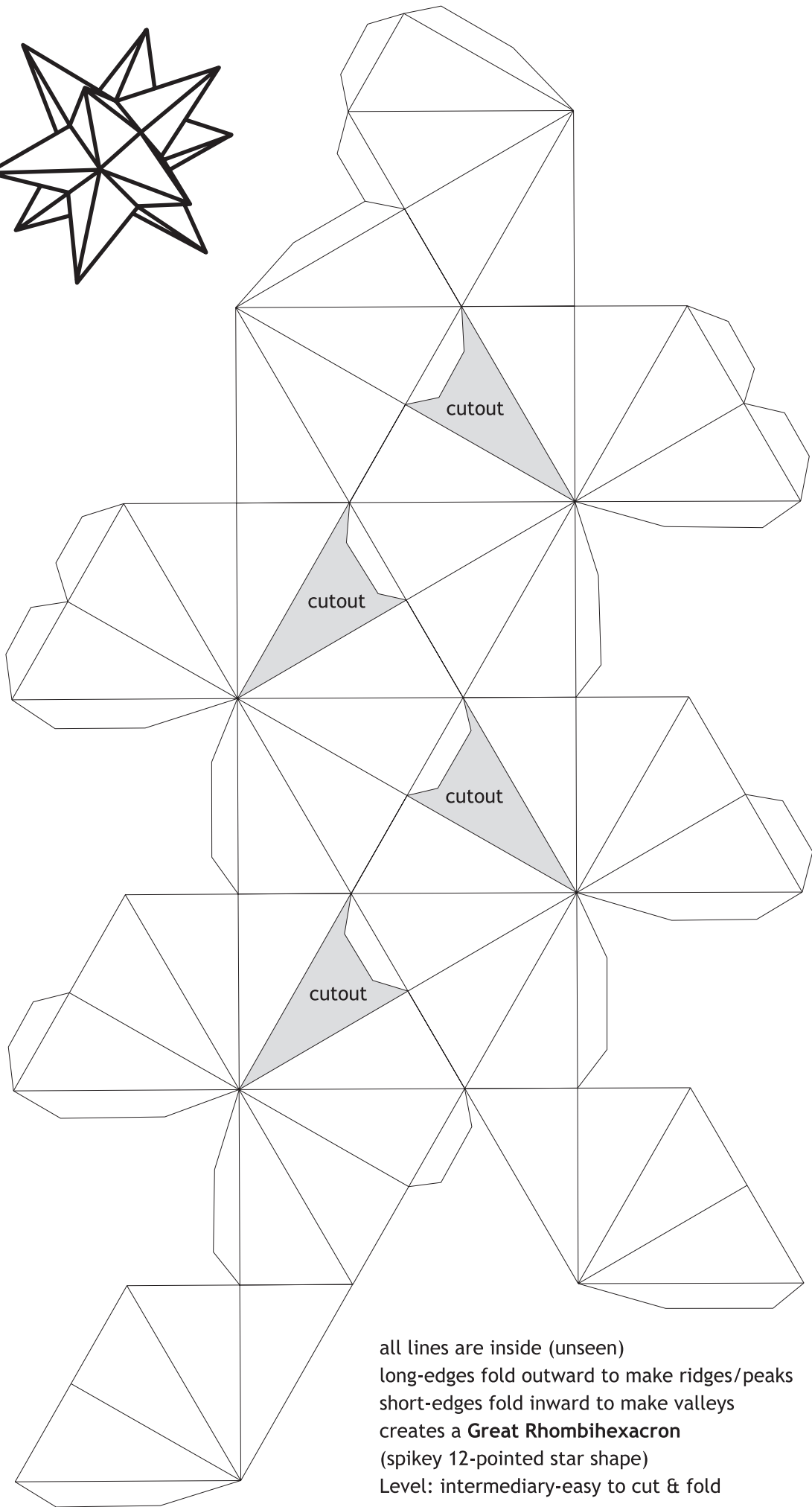
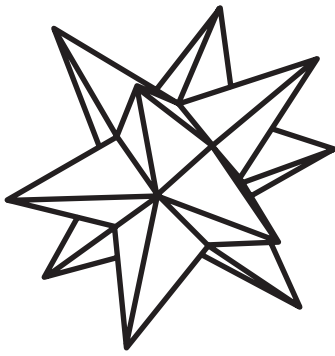
all lines are inside (unseen)
solid-lines fold outward to make ridges/peaks
dashed-lines fold inward to make valleys
creates a compound of a **Cube & Octahedron**
Level: intermediate to cut & fold



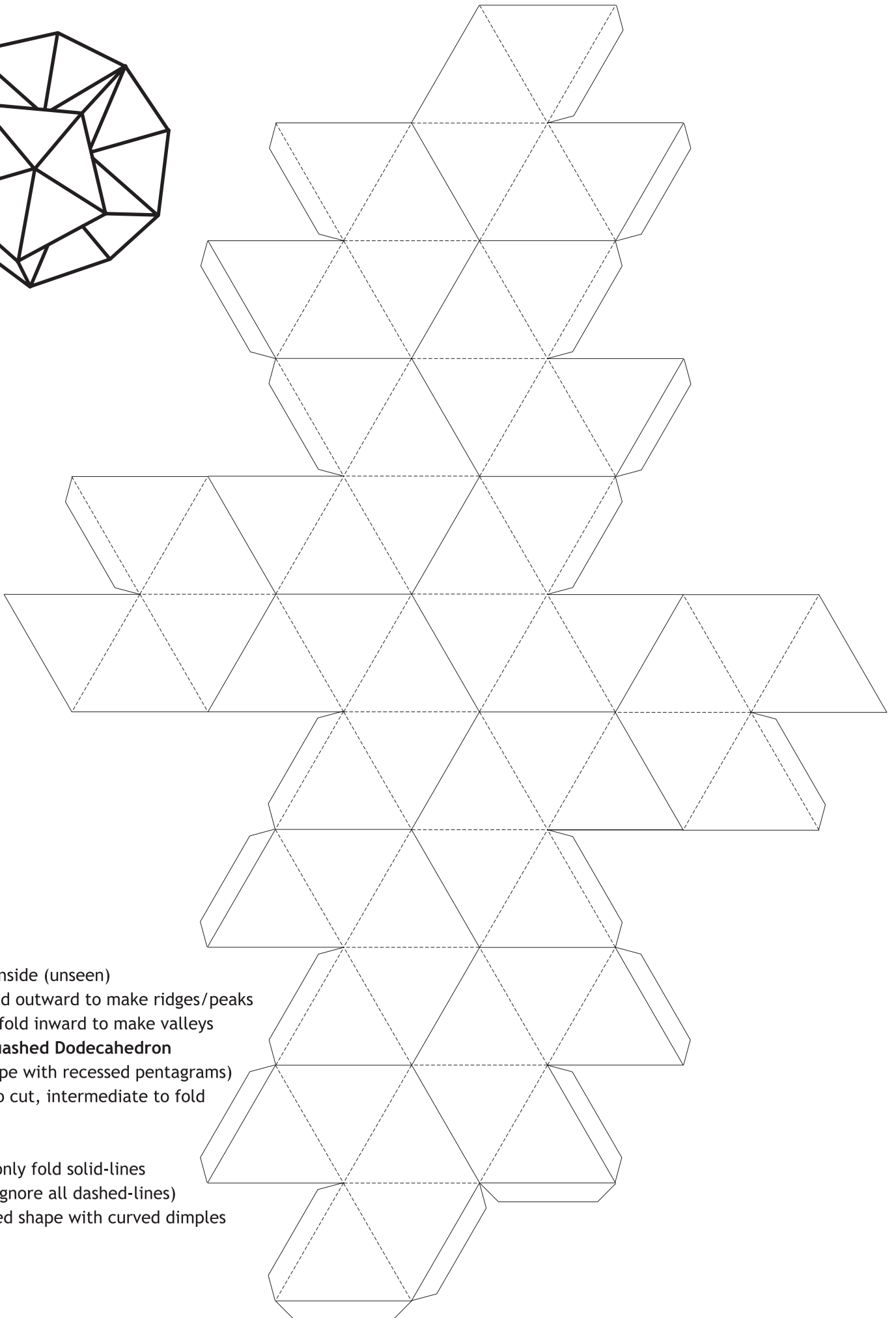
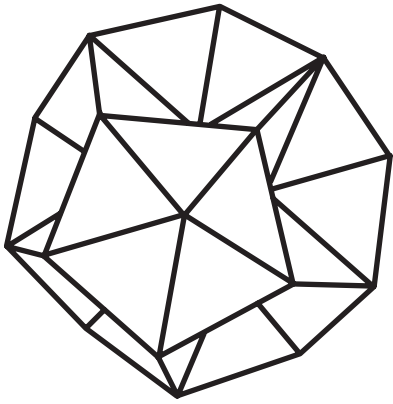
all lines are inside (unseen)
solid-lines fold outward to make ridges/peaks
dashed-lines fold inward to make valleys
creates a **Octahemioctahedron**
(14-sided shape with recessed squares)
Level: easy to cut, somewhat tricky to fold



all lines are inside (unseen)
solid-lines fold outward to make ridges/peaks
dashed-lines fold inward to make valleys
creates a **Cubohemioctahedron**
(14-sided shape with recessed triangles)
Level: intermediary-easy to cut & fold

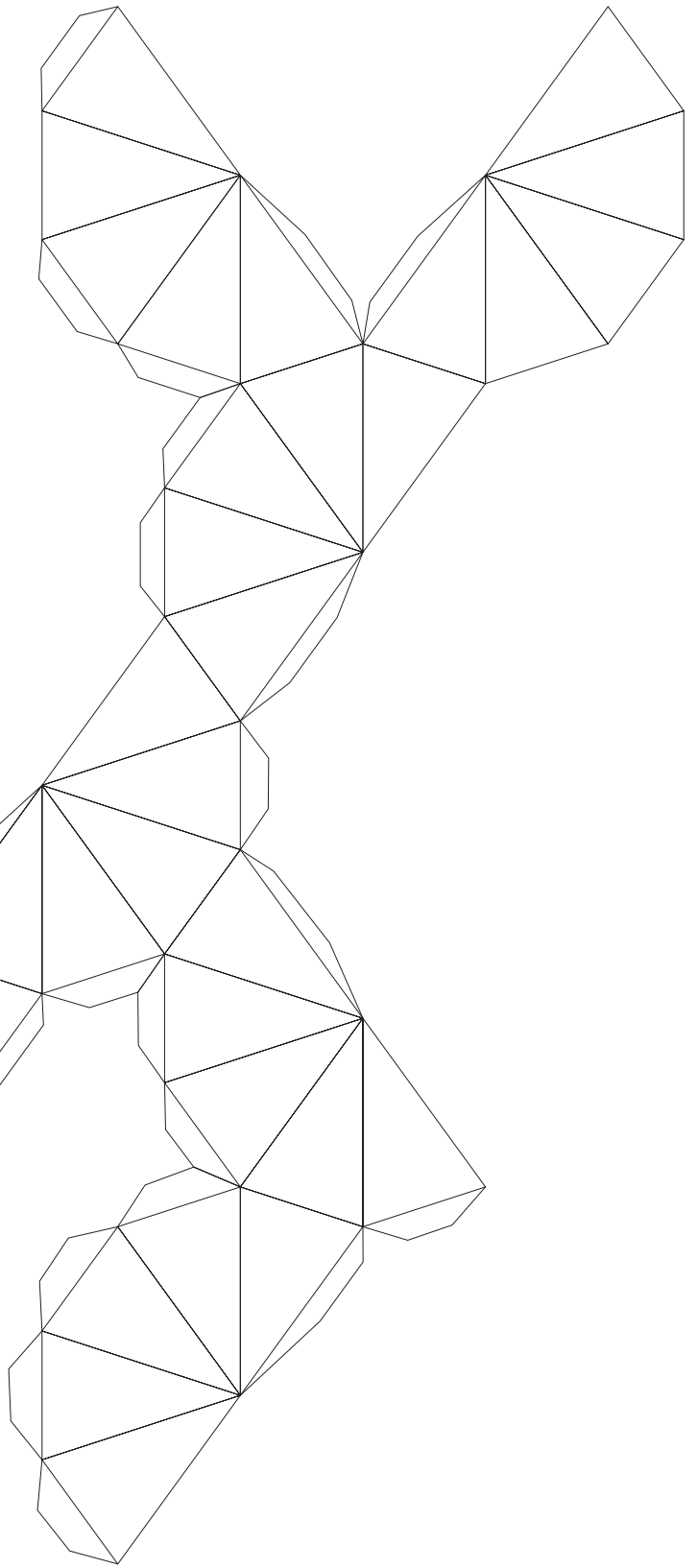
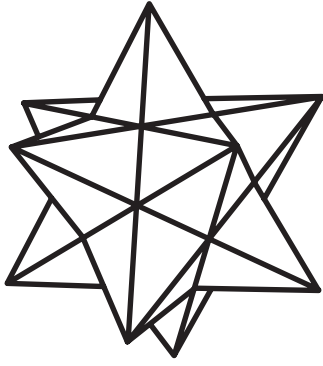


all lines are inside (unseen)
long-edges fold outward to make ridges/peaks
short-edges fold inward to make valleys
creates a **Great Rhombihexacron**
(spikey 12-pointed star shape)
Level: intermediary-easy to cut & fold

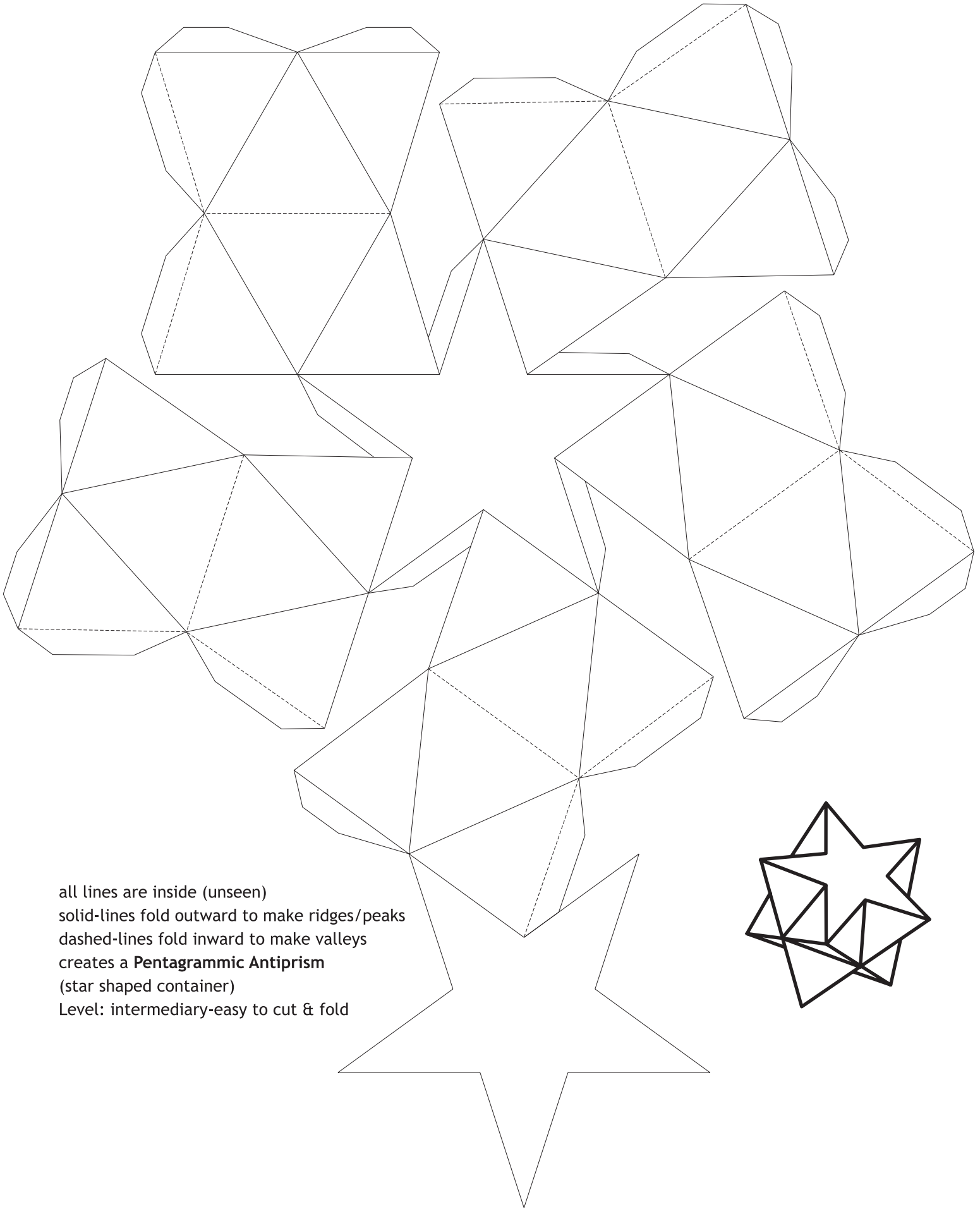


all lines are inside (unseen)
solid-lines fold outward to make ridges/peaks
dashed-lines fold inward to make valleys
creates a **Squashed Dodecahedron**
(12-sided shape with recessed pentagrams)
Level: easy to cut, intermediate to fold

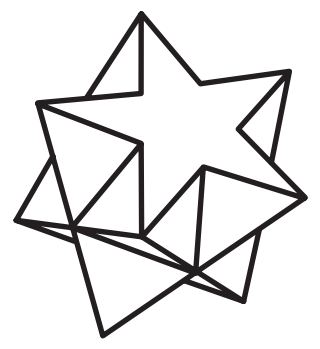
ALTERNATE: only fold solid-lines
(completely ignore all dashed-lines)
to get 12-sided shape with curved dimples

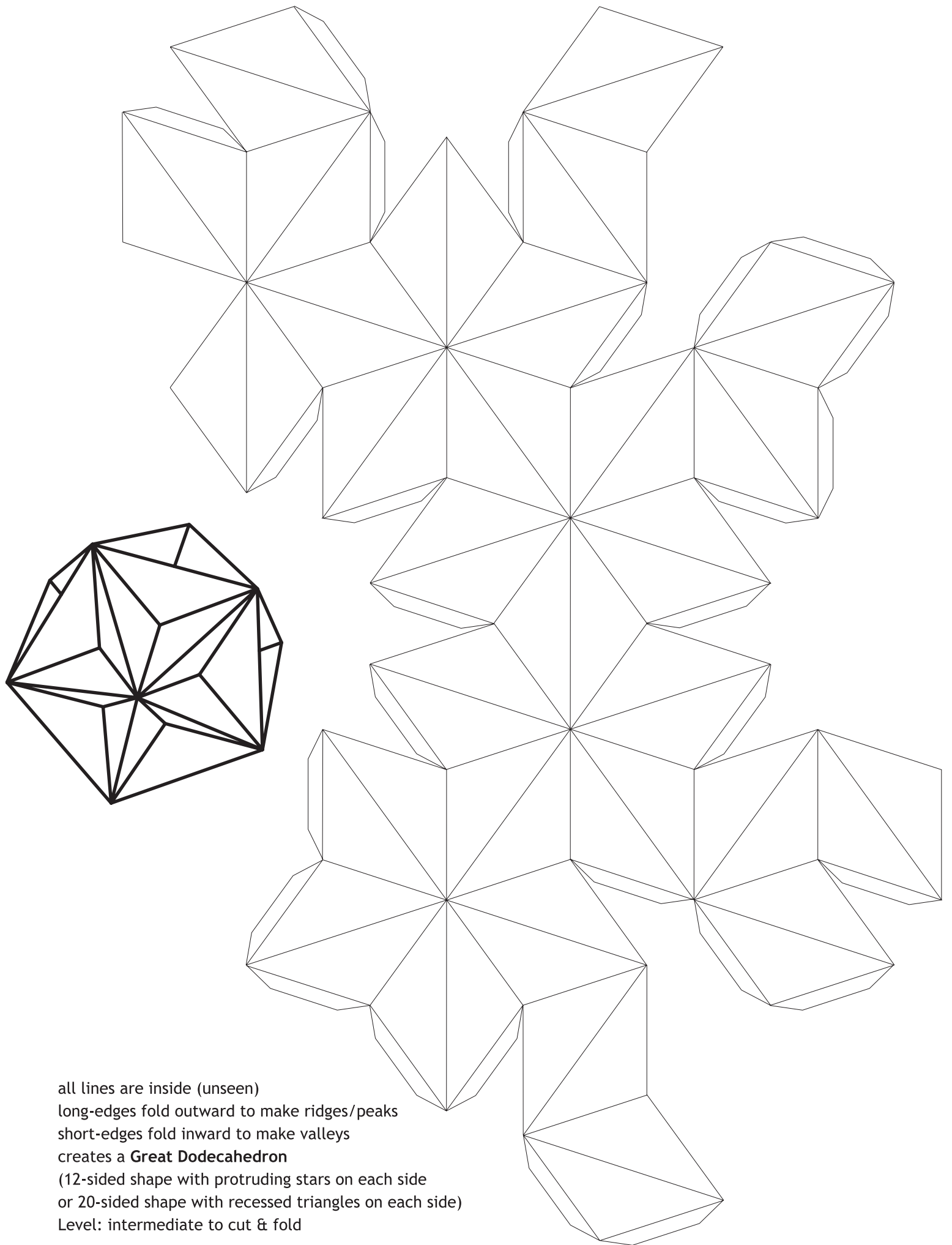


all lines are inside (unseen)
long-edges fold outward to make ridges/peaks
short-edges fold inward to make valleys
creates a **Stellated Dodecahedron**
(12-pointed star shape)
Level: intermediate to cut & fold

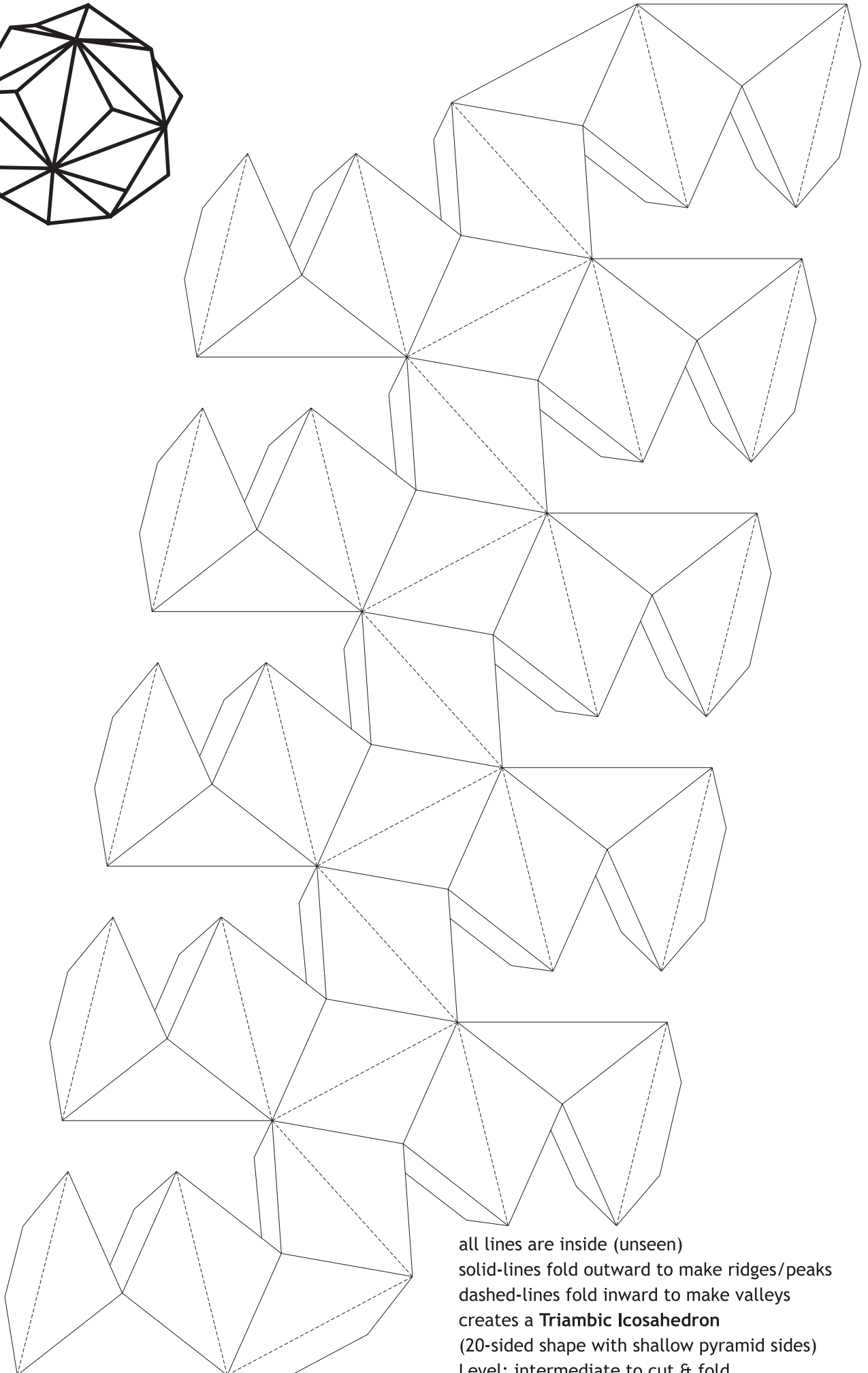
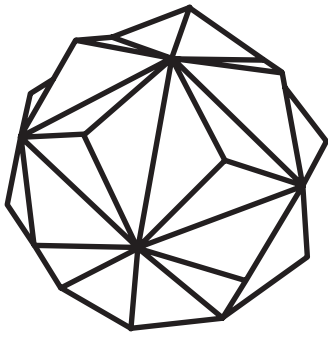


all lines are inside (unseen)
solid-lines fold outward to make ridges/peaks
dashed-lines fold inward to make valleys
creates a **Pentagrammic Antiprism**
(star shaped container)
Level: intermediary-easy to cut & fold

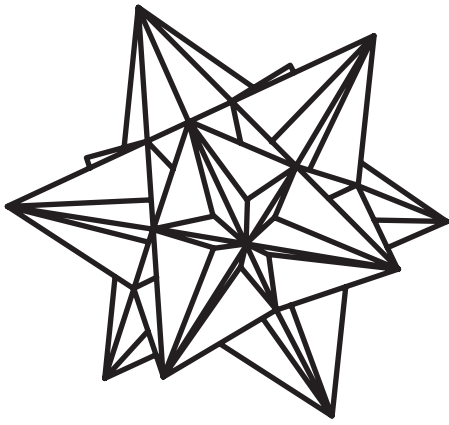




all lines are inside (unseen)
long-edges fold outward to make ridges/peaks
short-edges fold inward to make valleys
creates a **Great Dodecahedron**
(12-sided shape with protruding stars on each side
or 20-sided shape with recessed triangles on each side)
Level: intermediate to cut & fold



all lines are inside (unseen)
solid-lines fold outward to make ridges/peaks
dashed-lines fold inward to make valleys
creates a **Triambic Icosahedron**
(20-sided shape with shallow pyramid sides)
Level: intermediate to cut & fold



all lines are inside (unseen)
solid-lines fold outward to make ridges/peaks
dashed-lines fold inward to make valleys
creates a **Great Icosahedron**
(12-sided shape with star-shaped points)
Level: difficult to cut, more difficult to fold
(printing on larger paper helps considerably)

